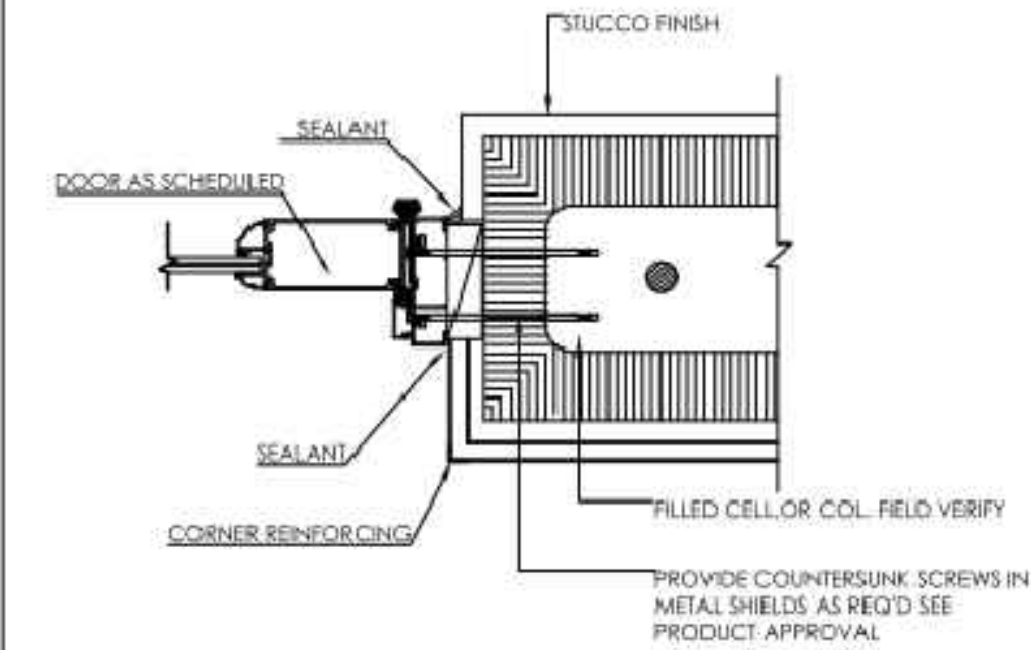
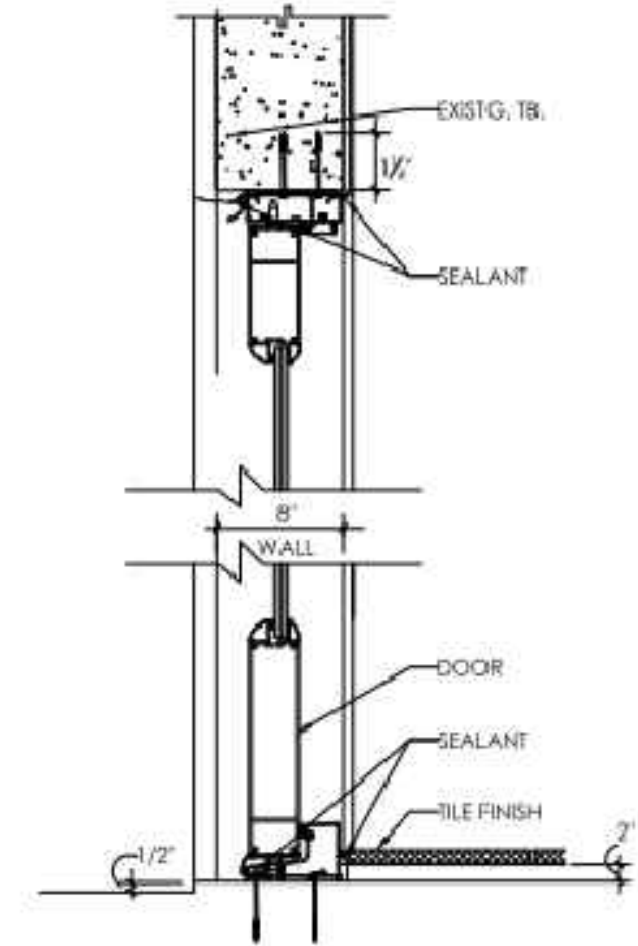


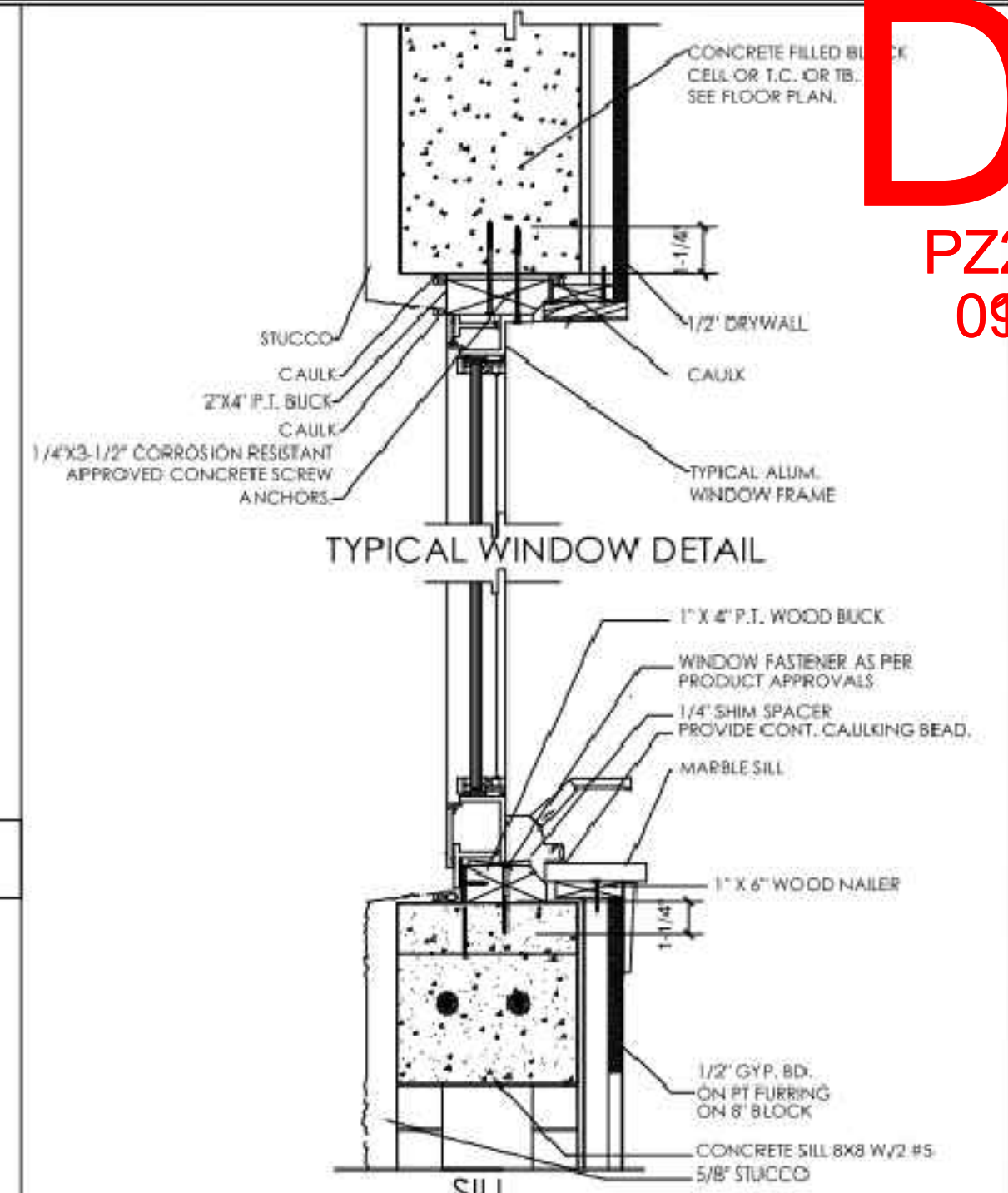
FLOOR FINISH SCHEDULE				
LEGEND	LABEL	LOCATION	DESCRIPTION	NOTES
	FF-01	KITCHEN, LIVING, DINING, BEDROOM	CERAMIC TILE	SEE FLOOR PLAN FINISH FOR LOCATIONS OF USE. INSTALL IN ACCORDANCE TO MANUFACTURER'S SPECIFICATIONS.
	FF-02	BATHROOMS	CERAMIC TILE	SEE FLOOR PLAN FINISH FOR LOCATIONS OF USE. INSTALL IN ACCORDANCE TO MANUFACTURER'S SPECIFICATIONS.
<div><div></div><div>ALL NEW SOUNDPROOF SHALL BE WHISPERMAT OR SIMILAR.</div><div>ACOUSTICAL LINING TO COMPLY WITH FLORIDA BUILDING CODE 2017.</div><div>MINIMUM STC RATING PER FBC 2017 = 50 MUST BE PROVIDED.</div></div>				



13 DOOR JAMB DETAIL
NTS



13 FRENCH DOOR DETAIL
NTS



- IF THE DESIGN PRESSURES IN THE WINDOW DOES NOT EXCEED 65 P.S.F., SECURE THE 2" WOOD BUCK TO THE STRUCTURE USING 1/4" X 3 1/4" CORROSION RESISTANCE APPROVED CONCRETE ANCHORS WITH A MINIMUM EMBEDMENT OF 1 1/4" @ 16" O.C. (6" FROM THE ENDS) ON 3000 P.S.I. CONCRETE AND @ 16" O.C. (6" FROM THE ENDS) ON ASTM C-90 CONCRETE BLOCKS OR SECURE THE WINDOW DIRECTLY TO THE STRUCTURE WITH 1/4"x3 1/4" CORROSION RESISTANT APPROVED CONCRETE ANCHORS WITH A MINIMUM EMBEDMENT OF 1 1/4" SPACED AS IT IS ON THE NOTICE OF ACCEPTANCE. A NOMINAL 1"x3" P.T. WOOD SPACER SHALL BE USED BETWEEN THE WINDOW AND THE STRUCTURE BUT THE EMBEDMENT IN THE CONCRETE BLOCK SHALL REMAIN TO BE 1 1/4" MIN.
- ALL 2"X WOOD BUCK END/OR 1"X3" WOOD SPACER SHALL BE PROPERLY CAULKED.
- REFER TO THE INSTALLATION INSTRUCTIONS FOR THE SPECIFIC PRODUCT BEING INSTALLED AND SHIM, LEVER, AND SQUARE TO ENSURE PROPER OPERATION.
- FILL VOID BETWEEN WINDOW AND WOOD BUCK WITH INSULATION, BEING CAREFUL NOT TO BOW WINDOW FRAME.
- APPLY A CONTINUOUS BEAD OF URETHANE SEALANT AROUND WINDOW. CHECK MANUFACT. RECOMMENDATIONS FOR SURFACE PREP, APPLICATION, AND INSTALLATION.

13 WINDOW AND DOOR BUCK DETAIL
NTS

KEYPLAN

Alioskar
Ganem
Osorio

Digitally signed by
Alioskar Ganem
Osorio

Date: 2024.06.14
11:38:02 -04'00'

CONSULTING ENGINEER



ECO POMPANO TOWNHOME
DEVELOPMENT

3225 NE 5TH ST. POMPANO
BEACH, FL. 33062 UNIT 2

NOTES/COMMENTS

REVISIONS / SUBMISSIONS

DRAWN BY: AG
CHECKED BY: AG
INITIAL DRAWING
RELEASE DATE: ISSUE DATE